



**Guru Gobind Singh Foundation's
Guru Gobind Singh College of Engineering & Research Centre**

Approved by AICTE, Govt. of Maharashtra & DTE Mumbai, Affiliated to Savitribai Phule Pune University (Formerly known as University of Pune)

NAAC Accreditation first cycle "B+" with CGPA 2.72 in April 2019, DNV – GL Certified for ISO 9001 : 2015 Standards



Green campus initiatives Institutional Initiatives to keep the campus clean and green

Security guards and restricted barriers in the college campus which helps to keep the campus clean and green by avoiding entry of unnecessary vehicles and persons.



Photograph of the Security and Restricted Entry at Main Gate



**Dr. Neelkanth G. Nikam
PRINCIPAL**

**PRINCIPAL
GURU GOBIND SINGH COLLEGE OF ENGINEERING
& RESEARCH CENTRE, NASHIK**



Guru Gobind Singh Foundation's Guru Gobind Singh College of Engineering & Research Centre

Approved by AICTE, Govt. of Maharashtra & DTE Mumbai, Affiliated to Savitribai Phule Pune University (Formerly known as University of Pune)

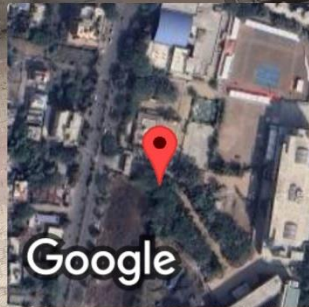
NAAC Accreditation first cycle "B+" with CGPA 2.72 in April 2019, DNV – GL Certified for ISO 9001 : 2015 Standards



Use of shade parking avoiding fuel vaporization loss and impact on environment



 **GPS Map Camera**



Nashik, Maharashtra, India

XQ5H+C2Q, Pathardi Rd, Pandav Nagari, Pathardi Phata, Nashik, Maharashtra

422009, India

Lat 19.958373°

Long 73.777763°

06/12/23 01:06 PM GMT +05:30



Dr. Neelkanth G. Nikam
PRINCIPAL

PRINCIPAL
GURU GOBIND SINGH COLLEGE OF ENGINEERING
& RESEARCH CENTRE, NASHIK



Guru Gobind Singh Foundation's Guru Gobind Singh College of Engineering & Research Centre

Approved by AICTE, Govt. of Maharashtra & DTE Mumbai, Affiliated to Savitribai Phule Pune University (Formerly known as University of Pune)

NAAC Accreditation first cycle "B+" with CGPA 2.72 in April 2019, DNV – GL Certified for ISO 9001 : 2015 Standards



Pedestrian friendly roads: The institute has constructed all weather approach & pedestrian friendly internal roads by laying down the cement paver blocks to avoid damages. The paver blocks permits the percolation of rainwater to the ground, increasing the groundwater level.



Dr. Neelkanth G. Nikam
PRINCIPAL

PRINCIPAL
GURU GOBIND SINGH COLLEGE OF ENGINEERING
& RESEARCH CENTRE, NASHIK



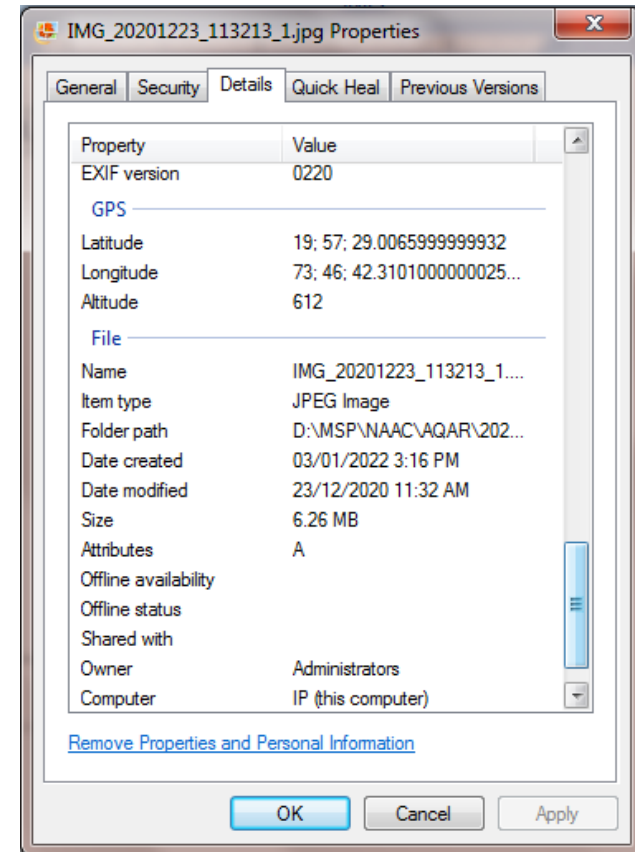
Guru Gobind Singh Foundation's Guru Gobind Singh College of Engineering & Research Centre

Approved by AICTE, Govt. of Maharashtra & DTE Mumbai, Affiliated to Savitribai Phule Pune University (Formerly known as University of Pune)

NAAC Accreditation first cycle "B+" with CGPA 2.72 in April 2019, DNV – GL Certified for ISO 9001 : 2015 Standards



Green Campus Initiatives: Pedestrian Friendly Pathways




Dr. Neelkanth G. Nikam
PRINCIPAL

PRINCIPAL
GURU GOBIND SINGH COLLEGE OF ENGINEERING
& RESEARCH CENTRE, NASHIK



Guru Gobind Singh Foundation's
Guru Gobind Singh College of Engineering & Research Centre

Approved by AICTE, Govt. of Maharashtra & DTE Mumbai, Affiliated to Savitribai Phule Pune University (Formerly known as University of Pune)

NAAC Accreditation first cycle "B+" with CGPA 2.72 in April 2019, DNV – GL Certified for ISO 9001 : 2015 Standards



Biometric, Enterprise Resource Planning (ERP) system and email is used in campus hence record is maintain without paper. (Paper less record maintain). This initiatives protect the trees and environment



Dr. Neelkanth G. Nikam
PRINCIPAL

PRINCIPAL
GURU GOBIND SINGH COLLEGE OF ENGINEERING
& RESEARCH CENTRE, NASHIK



Guru Gobind Singh Foundation's Guru Gobind Singh College of Engineering & Research Centre

Approved by AICTE, Govt. of Maharashtra & DTE Mumbai, Affiliated to Savitribai Phule Pune University (Formerly known as University of Pune)

NAAC Accreditation first cycle "B+" with CGPA 2.72 in April 2019, DNV - GL Certified for ISO 9001 : 2015 Standards



Guru Gobind Singh College of Engineering & Research Centre, Nashik

vmedulife platform is dedicated to all faculties who have contributed their professional life for learning innovations, sharing knowledge across nations, reducing diversity across people and development for student's benefits to uplift overall quality of living across world.

2023-24
Mechanical Engineering | GGSF-Engi

OBE (Outcome Based Education)

Outcome Academic Planning Online Feedback Online Exam Result Analysis Rubrics Assignment (Internal Test) IQAC Reports
Management Dashboard

Teaching & Learning

Student Details Events Learning Management System Online Grievance Leaderboard Notice Board Mentoring Training and Placement
My Profile Committee and Meeting Course File

Recent Updates

- Helpdesk Assistance 172
- Telephonic Assistance 1118
- Email Assistance 0
- Online Demonstration 53
- Onsite Assistance 0

Leaderboard

Milind Patil 3052


Outcome Publish for Result An...
Manisha Sonawane
2 Credit | Result Analysis
21st Mar, 2024 02:37 PM

Added Mentor Meeting
Pallavi Padalkar
2 Credit | Mentoring
21st Mar, 2024 02:35 PM

COPO Mapping Published
Krushin Kumbhar

Institutes ERP (e-Governance System)




Dr. Neelkanth G. Nikam
PRINCIPAL
PRINCIPAL
GURU GOBIND SINGH COLLEGE OF ENGINEERING
& RESEARCH CENTRE, NASHIK



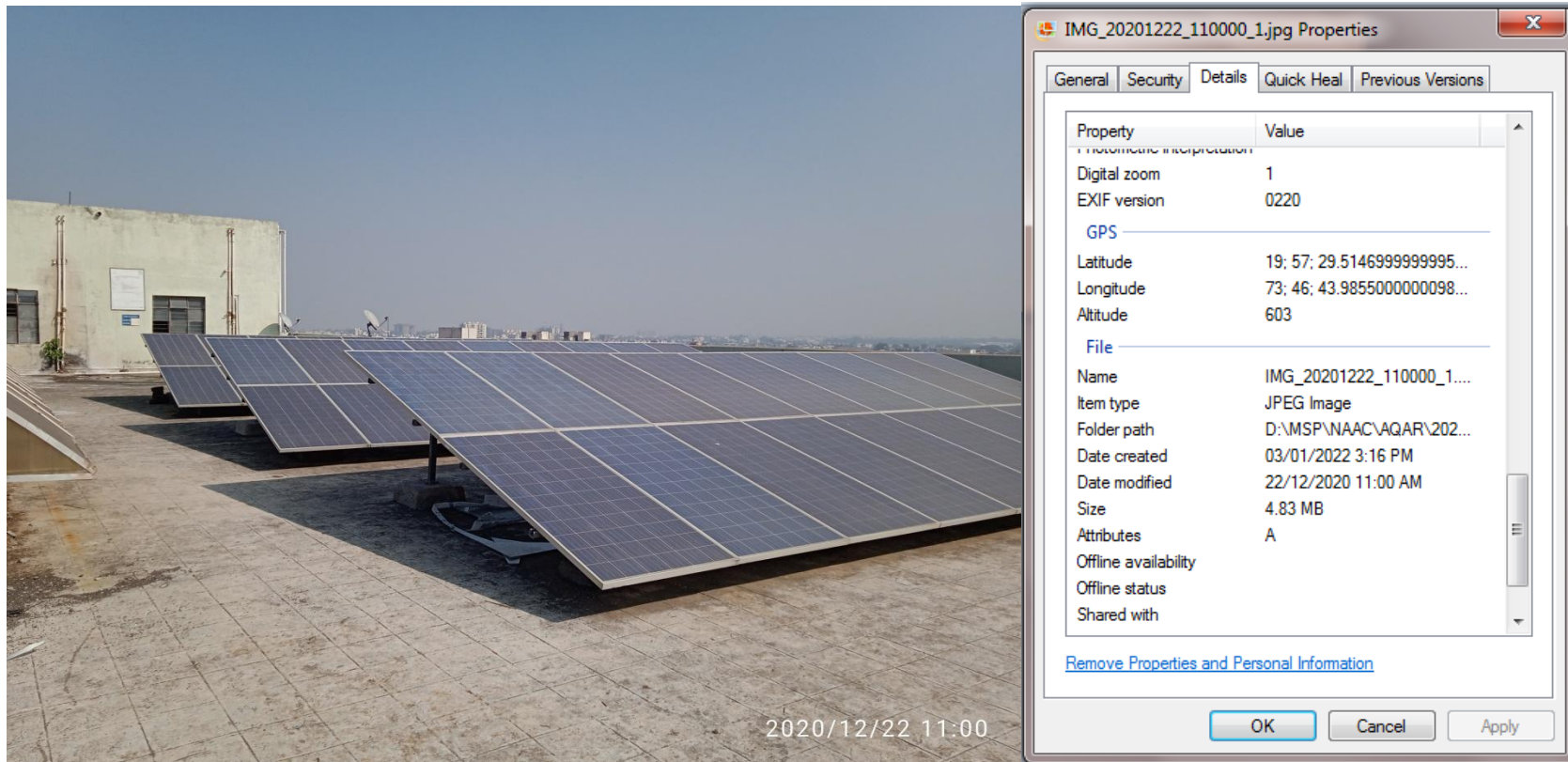
Guru Gobind Singh Foundation's Guru Gobind Singh College of Engineering & Research Centre

Approved by AICTE, Govt. of Maharashtra & DTE Mumbai, Affiliated to Savitribai Phule Pune University (Formerly known as University of Pune)

NAAC Accreditation first cycle "B+" with CGPA 2.72 in April 2019, DNV – GL Certified for ISO 9001 : 2015 Standards



Use of solar energy for electricity generation – Saves nonrenewable (conventional) fuels and reduces hazard emission




Dr. Neelkanth G. Nikam
PRINCIPAL

PRINCIPAL
GURU GOBIND SINGH COLLEGE OF ENGINEERING
& RESEARCH CENTRE, NASHIK



Guru Gobind Singh Foundation's Guru Gobind Singh College of Engineering & Research Centre

Approved by AICTE, Govt. of Maharashtra & DTE Mumbai, Affiliated to Savitribai Phule Pune University (Formerly known as University of Pune)

NAAC Accreditation first cycle "B+" with CGPA 2.72 in April 2019, DNV – GL Certified for ISO 9001 : 2015 Standards



Canteen food waste is converted in to garden fertilizer using eco-composter that enhances the plantation and growth:



Property	Value
GPS	
Latitude	19; 57; 33.77190000000069...
Longitude	73; 46; 37.25640000000130...
Altitude	0
File	
Name	IMG_20201223_111554.jpg
Item type	JPG File
Folder path	D:\MAA\NAAC\Photos\Sol...
Date created	30/12/2021 11:58
Date modified	23/12/2020 11:15
Size	3.35 MB
Attributes	A
Availability	
Offline status	
Shared with	<Unknown Contact>
Owner	DESKTOP-TUG5AEF\staff
Computer	DESKTOP-TUG5AEF (this ...

[Remove Properties and Personal Information](#)




Dr. Neelkanth G. Nikam
PRINCIPAL

PRINCIPAL
GURU GOBIND SINGH COLLEGE OF ENGINEERING
& RESEARCH CENTRE, NASHIK



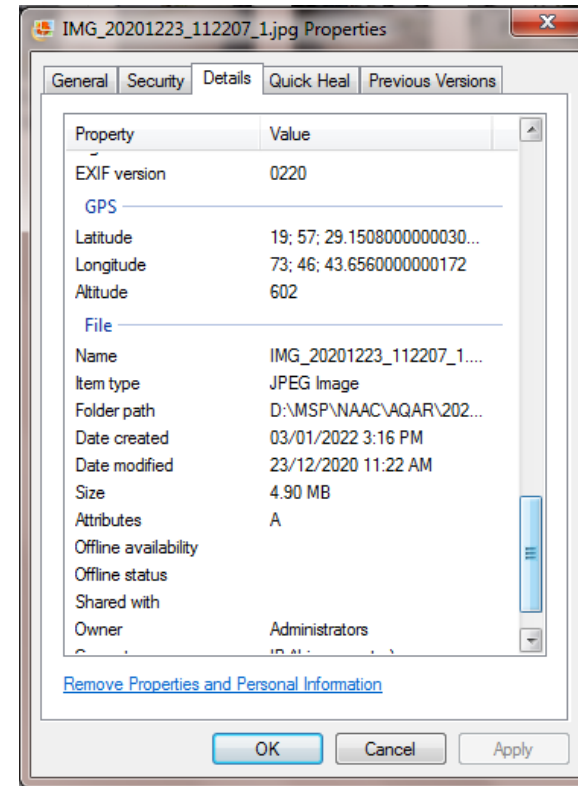
Guru Gobind Singh Foundation's Guru Gobind Singh College of Engineering & Research Centre

Approved by AICTE, Govt. of Maharashtra & DTE Mumbai, Affiliated to Savitribai Phule Pune University (Formerly known as University of Pune)

NAAC Accreditation first cycle "B+" with CGPA 2.72 in April 2019, DNV – GL Certified for ISO 9001 : 2015 Standards



Water Conservation Facility: Rain water harvesting




Dr. Neelkanth G. Nikam
PRINCIPAL

PRINCIPAL
GURU GOBIND SINGH COLLEGE OF ENGINEERING
& RESEARCH CENTRE, NASHIK



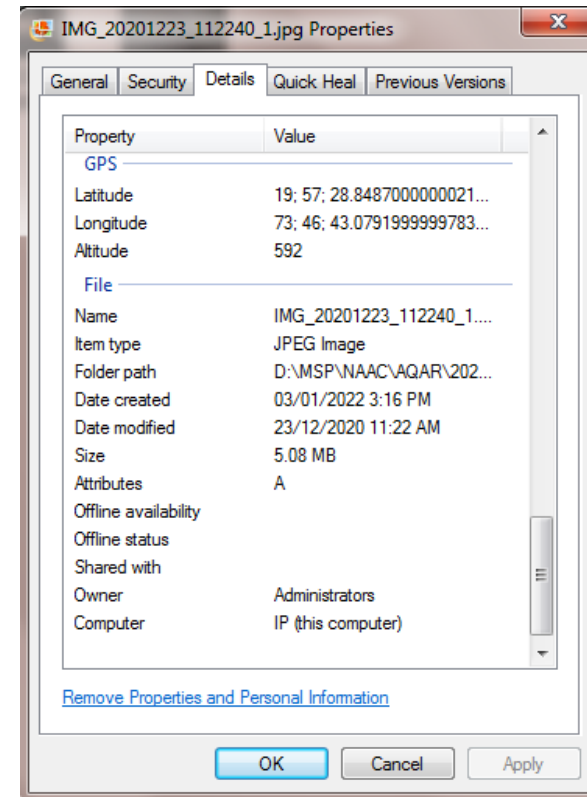
Guru Gobind Singh Foundation's Guru Gobind Singh College of Engineering & Research Centre

Approved by AICTE, Govt. of Maharashtra & DTE Mumbai, Affiliated to Savitribai Phule Pune University (Formerly known as University of Pune)

NAAC Accreditation first cycle "B+" with CGPA 2.72 in April 2019, DNV – GL Certified for ISO 9001 : 2015 Standards



Water Conservation Facility: Rain water harvesting




Dr. Neelkanth G. Nikam
PRINCIPAL

PRINCIPAL
GURU GOBIND SINGH COLLEGE OF ENGINEERING
& RESEARCH CENTRE, NASHIK



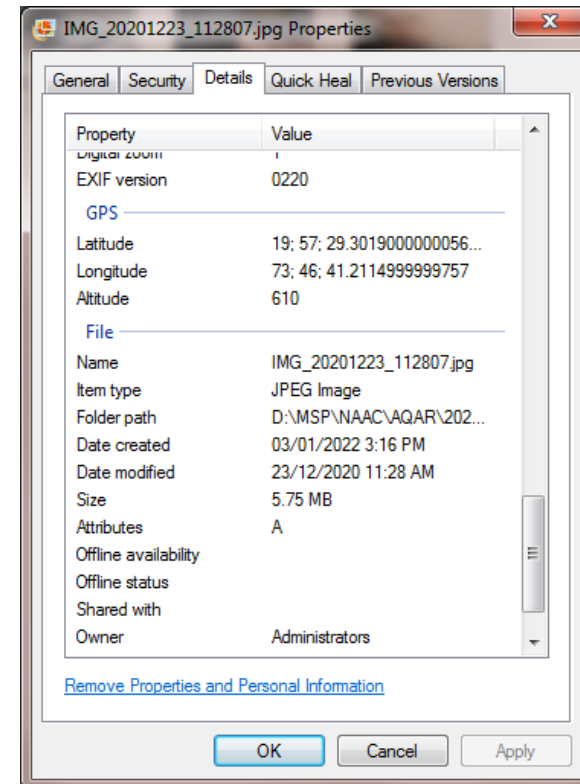
Guru Gobind Singh Foundation's Guru Gobind Singh College of Engineering & Research Centre

Approved by AICTE, Govt. of Maharashtra & DTE Mumbai, Affiliated to Savitribai Phule Pune University (Formerly known as University of Pune)

NAAC Accreditation first cycle "B+" with CGPA 2.72 in April 2019, DNV – GL Certified for ISO 9001 : 2015 Standards



Water Conservation Facility of Open well Recharge



Green Campus Initiatives: Promote the use of bicycles – saves the fuel and emission




Dr. Neelkanth G. Nikam
PRINCIPAL

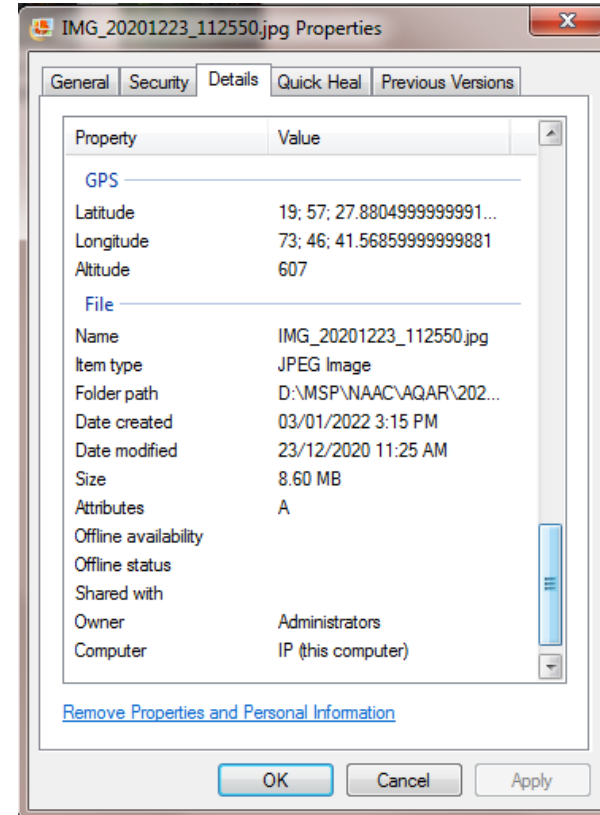
PRINCIPAL
GURU GOBIND SINGH COLLEGE OF ENGINEERING
& RESEARCH CENTRE, NASHIK



Guru Gobind Singh Foundation's Guru Gobind Singh College of Engineering & Research Centre

Approved by AICTE, Govt. of Maharashtra & DTE Mumbai, Affiliated to Savitribai Phule Pune University (Formerly known as University of Pune)

NAAC Accreditation first cycle "B+" with CGPA 2.72 in April 2019, DNV – GL Certified for ISO 9001 : 2015 Standards



Green Campus Initiatives: Landscaping and Tree Plantation




Dr. Neelkanth G. Nikam
PRINCIPAL

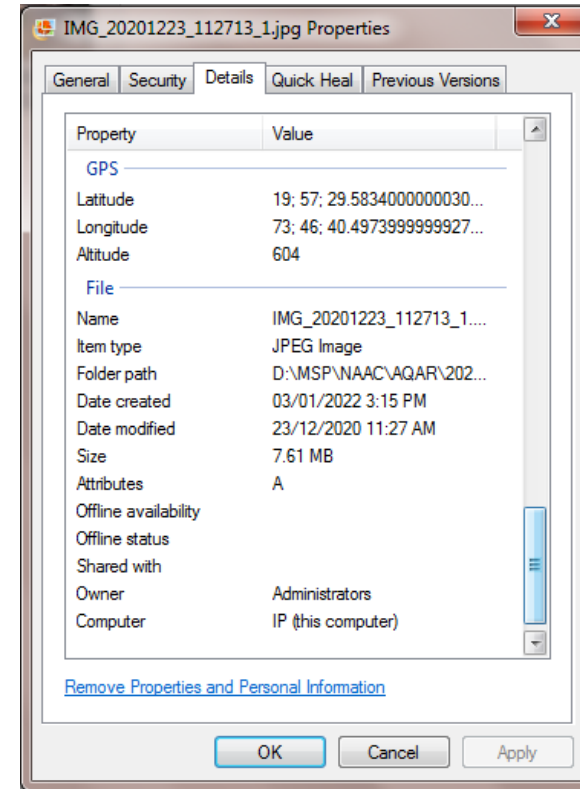
PRINCIPAL
GURU GOBIND SINGH COLLEGE OF ENGINEERING
& RESEARCH CENTRE, NASHIK



Guru Gobind Singh Foundation's Guru Gobind Singh College of Engineering & Research Centre


Approved by AICTE, Govt. of Maharashtra & DTE Mumbai, Affiliated to Savitribai Phule Pune University (Formerly known as University of Pune)

NAAC Accreditation first cycle "B+" with CGPA 2.72 in April 2019, DNV – GL Certified for ISO 9001 : 2015 Standards



Green Campus Initiatives: Landscaping and Tree Plantation




Dr. Neelkanth G. Nikam
PRINCIPAL

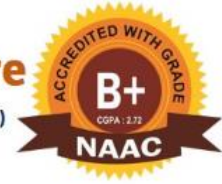
PRINCIPAL
GURU GOBIND SINGH COLLEGE OF ENGINEERING
& RESEARCH CENTRE, NASHIK



Guru Gobind Singh Foundation's Guru Gobind Singh College of Engineering & Research Centre

Approved by AICTE, Govt. of Maharashtra & DTE Mumbai, Affiliated to Savitribai Phule Pune University (Formerly known as University of Pune)

NAAC Accreditation first cycle "B+" with CGPA 2.72 in April 2019, DNV – GL Certified for ISO 9001 : 2015 Standards



IMG_20201223_113421_1.jpg Properties

General Security Details Quick Heal Previous Versions

Property	Value
EXIF version	0220
GPS	
Latitude	19; 57; 31.4784999999974...
Longitude	73; 46; 40.79950000000229...
Altitude	611
File	
Name	IMG_20201223_113421_1....
Item type	JPEG Image
Folder path	D:\MSP\NAAC\AQAR\202...
Date created	03/01/2022 3:15 PM
Date modified	23/12/2020 11:34 AM
Size	5.44 MB
Attributes	A
Offline availability	
Offline status	
Shared with	
Owner	Administrators
Computer	IP (this computer)

[Remove Properties and Personal Information](#)

OK Cancel Apply




Dr. Neelkanth G. Nikam
PRINCIPAL

PRINCIPAL
GURU GOBIND SINGH COLLEGE OF ENGINEERING
& RESEARCH CENTRE, NASHIK



Guru Gobind Singh Foundation's Guru Gobind Singh College of Engineering & Research Centre

Approved by AICTE, Govt. of Maharashtra & DTE Mumbai, Affiliated to Savitribai Phule Pune University (Formerly known as University of Pune)

NAAC Accreditation first cycle "B+" with CGPA 2.72 in April 2019, DNV – GL Certified for ISO 9001 : 2015 Standards



Dr. Neelkanth G. Nikam
PRINCIPAL

PRINCIPAL
GURU GOBIND SINGH COLLEGE OF ENGINEERING
& RESEARCH CENTRE, NASHIK